



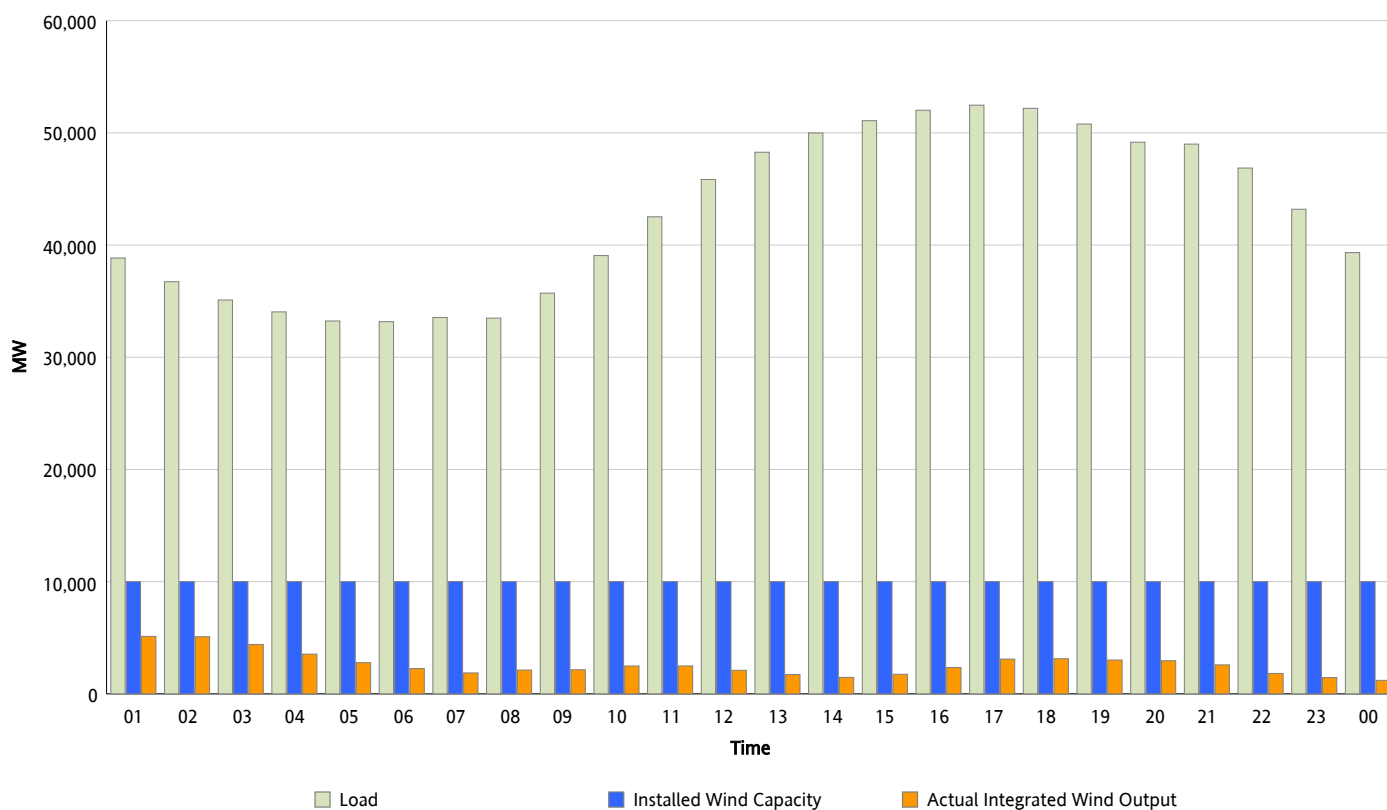
## ERCOT Grid Operations

### Wind Integration Report : 08/26/2012

Peak Load	52,469 MW
Load Peak Hour (HE)	17
Wind Over Peak	3,097 MW
Wind Record 06/19/12	8,368 MW
Max Wind Value*	5,297 MW
Wind Peak Time	01:00
Wind Integration %	14.07 %

#### Hourly Average Actual Load vs. Actual Wind Output

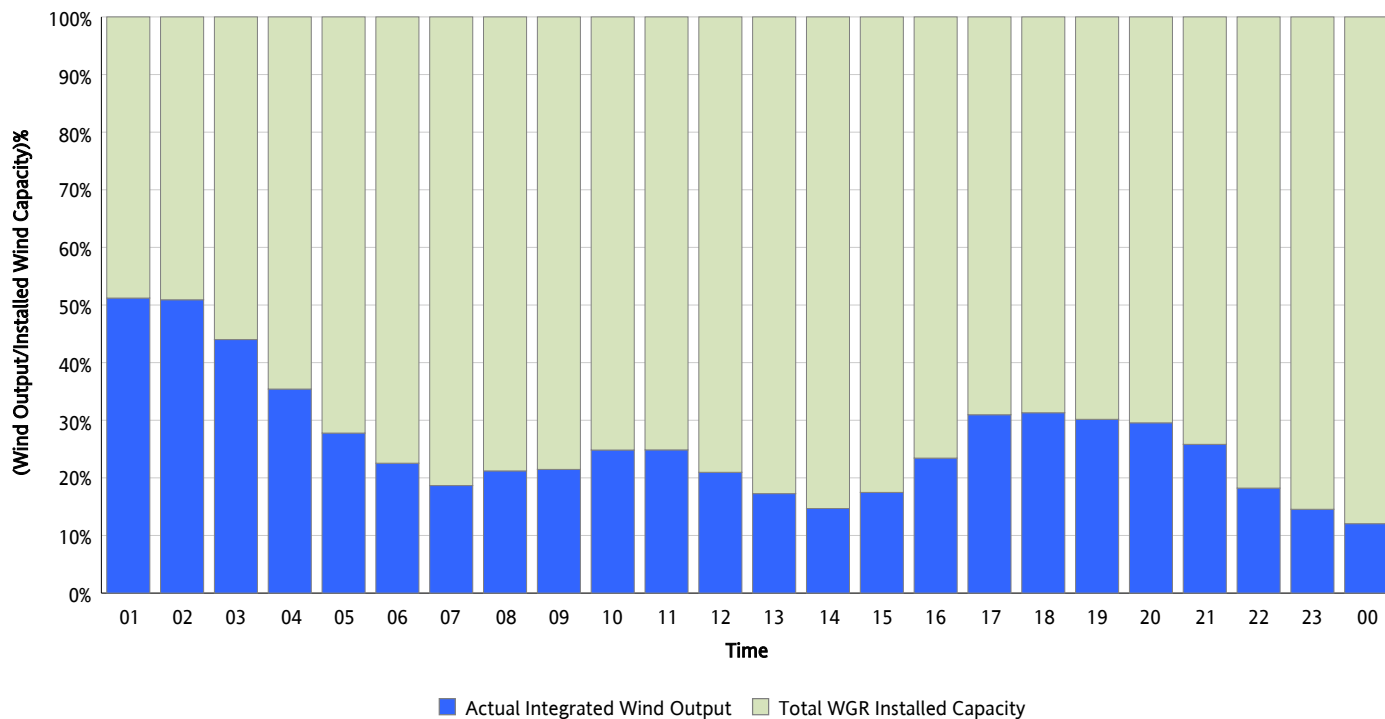
08/26/2012



\* Wind Record and Wind Max represent instantaneous values and the rest of the values are integrated over the hour

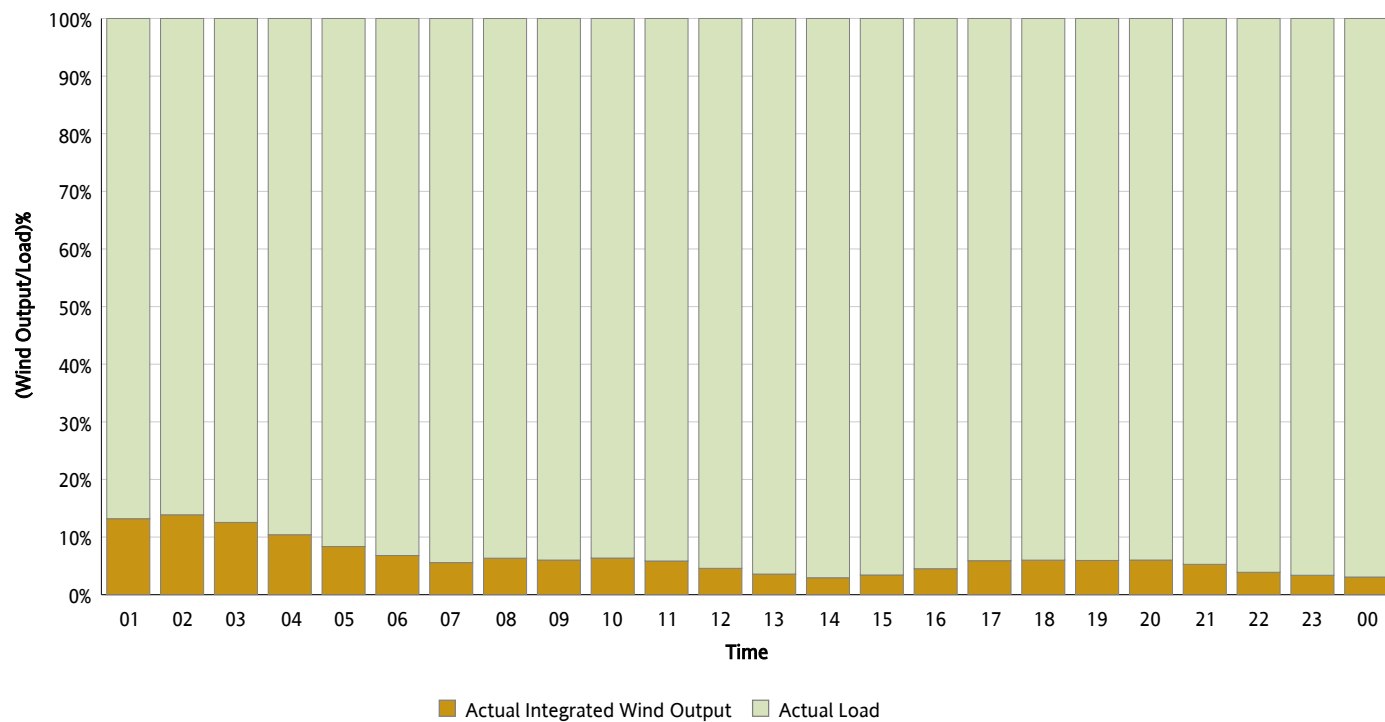
## Actual Wind Output as a Percentage of the Total Installed Wind Capacity

08/26/2012



## Actual Wind Output as a Percentage of the ERCOT Load

08/26/2012



## ERCOT Load vs. Actual Wind Output

08/19/2012 - 08/26/2012

